

PC NAVTEX PRO Mk11- User Instructions

Installation

The NASA Marine PC Navtex Pro is not watertight so it must be mounted in a position, which is dry at all times. Mount the antenna in a convenient position outside the cabin, then, connect the antenna to the receiver. Connect the power cable to the 12-volt supply. The red wire to positive and the wire with a black stripe to negative.

NAVTEX PC PRO MkII ENGINE DISPLAY SOFTWARE

The version 1.04 of this software is fully tested on Windows 98 and Windows XP, but not on Vista at the moment.

The NASA Navtex Engine is a two-channel receiver (518KHz and 490KHz) for small boat use and is supplied complete with an antenna and display software. The Engine is designed to be run continuously, and to have the stored Navtex messages downloaded at intervals into a PC. It stores approximately the last two days-worth of messages. The PC does not have to be permanently connected.

SOFTWARE FEATURES:

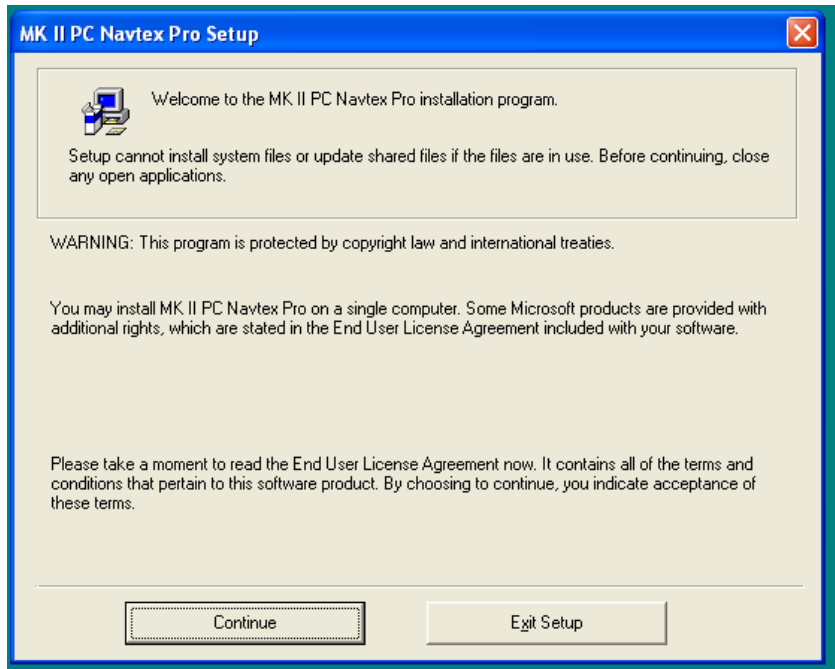
- ** You can instruct the Engine to switch between channel A (518KHz) and channel B (490KHz) manually, or set two automatic daily switching times per channel. The Engine time clock is synchronised to your PC Time.
- ** On initial set-up, the software will search for the communications port connected to the Engine.
- ** You can manually initiate downloading of the messages stored in the Engine, or set the software to automatically download on start-up.
- ** New messages received after download are captured and can be displayed.
- ** Downloaded messages can be filtered by channel, station and type, and duplicated messages are suppressed.
- ** Messages are displayed with the most recent ones at the top (except for live messages captured after download).
- ** You can select the local Navarea. There is a Global library of stations (Navarea 1 to 16) which can be edited by the user.
- ** The last used settings (COM port, message filters applied, autownload preference) are stored on shutdown.
- ** You can print selected messages if you need to.

SUPPORT

The help menu has an extensive help file. There is an email address for software technical support (in English) and a web link for updates and fixes where available.

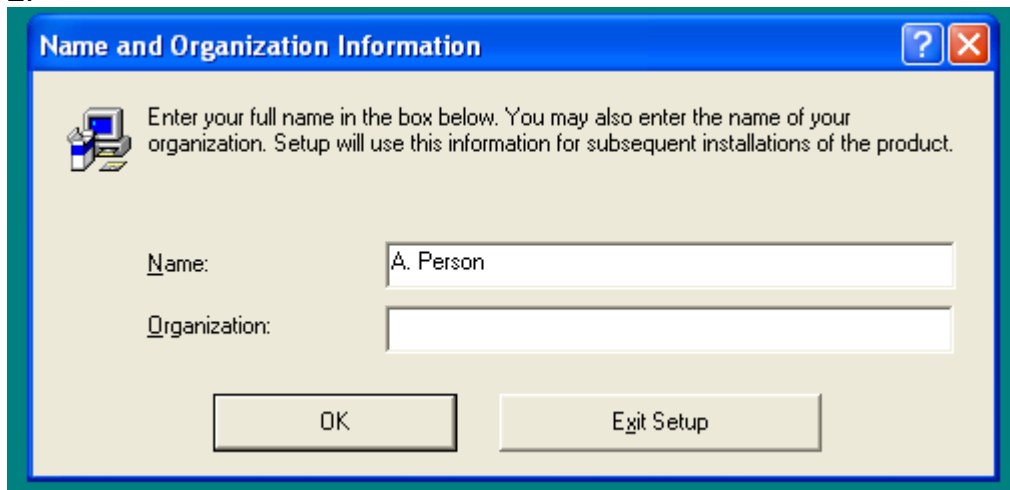
INSTALLING THE SOFTWARE

1. **Insert the CDROM:** If it does not autorun, open the CD drive folder and double-click on setup.exe.



Click "Continue"

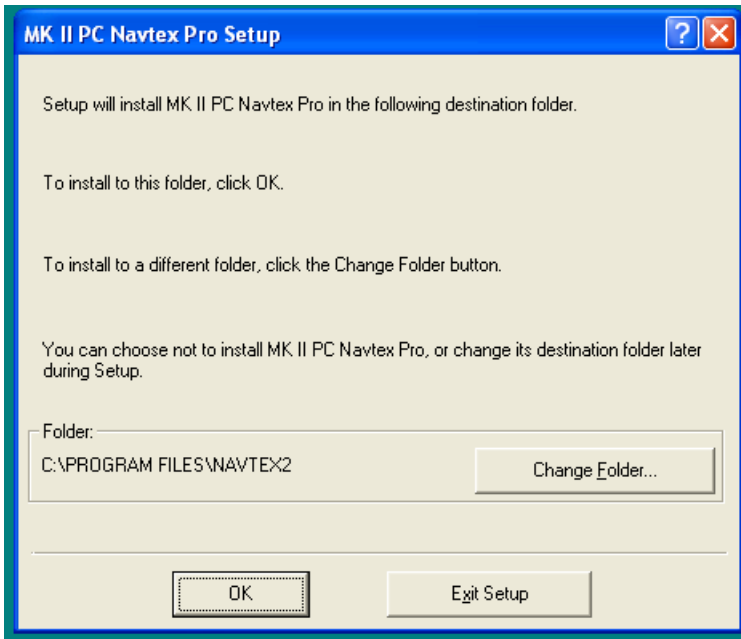
- 2.



Enter your name and organisation, Click "OK"

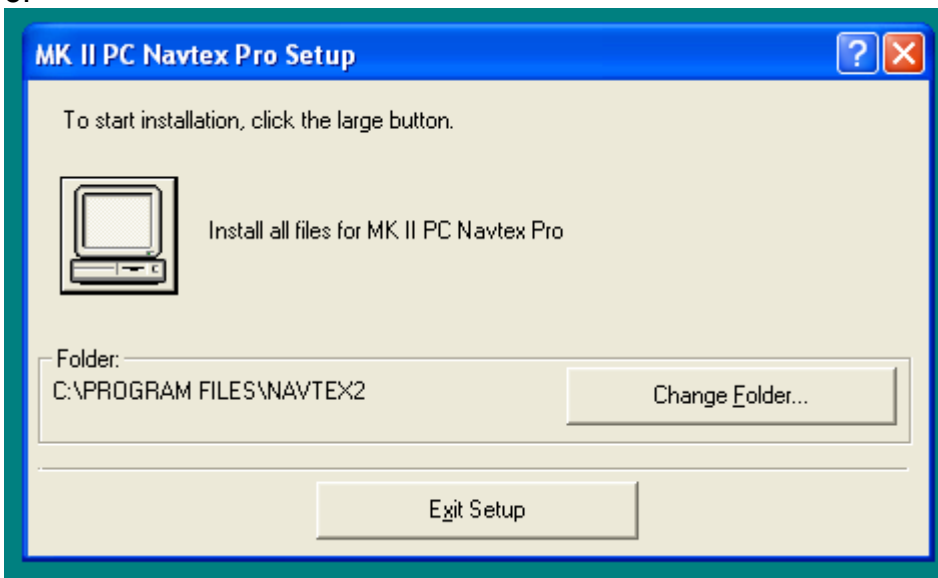
3. Confirm your name and organisation, and click "OK"

4.



Click "OK"

5.



Click the button



6. Files are now installed. You may be requested to enter a registration code.
7. A short-cut will be installed on the desktop, provided you use the default values path value as above.

That's it – all done!

FIRST USE OF THE NAVTEX 2 PRO

Install the receiver (“Engine”) and antenna in accordance with the instructions. Power-up the receiver and leave for a while to store a few messages.

Connect the serial cable supplied between the receiver and your PC/laptop, either direct to a suitable serial COM port, or via a serial-to-USB adaptor. If using an adaptor, this must have been installed, with its drivers, in line with the manufacturer’s instructions.

Step 1. Click “SET PORT AND CHANNELS” and “Auto-search”. The software will search port settings 1 to 16 for the Engine, and will stop and display a green “Connected “ message if it finds it. Click “Save” and “Finish”, and “Yes” when prompted to implement settings changes.

Step 2. Click “Poll Engine for Messages” to download stored messages. You will see lines of messages being displayed as the download progresses. After about 40 seconds “end” will be shown in the display bar and the messages will be displayed.

You are now up and running. There is a full description of the available facilities in the “Help” file, which you can call up by pressing “F1” or choosing “help” from the menu