

MARINE AUTOPILOT PILOT OPERATED CHECK VALVE

The marine autopilot pilot operated check valve is a line mounted valve that is used to lock steering cylinders. The G1/4 valve can also be used when a helm pump is without check valves to prevent the autopilot pump back driving the helm.

Description

This G1/4 in line check valve is designed to positively lock the service ports until a pilot pressure is applied to unlock the check valve piston. The body is made from anodized aluminium for harsh marine environments. The hardened piston runs in a steel sleeve for extended life.

Application

Designed to be used to positively lock steering cylinders or to prevent back drive from the autopilot pump should the helm pump not have check valves. It can be used with balanced or unbalanced cylinders by connecting the additional port to an external reservoir.

Features

- Manual valve.
- Positive lock.
- Hardened components to extend life.
- Used for balanced/unbalanced cylinders.
- Line mounted.



Technical Data

Performance

Rated flow	4.5 l/min
Maximum pressure	72 bar
Pilot ratio	2.25:1
Port size	G1/4
Temperature rating: minimum	-20°C
Temperature rating: maximum	+65°C

Recommended oil

Mineral based hydraulic	ISOVG37
Filtration (minimum)	25 micron

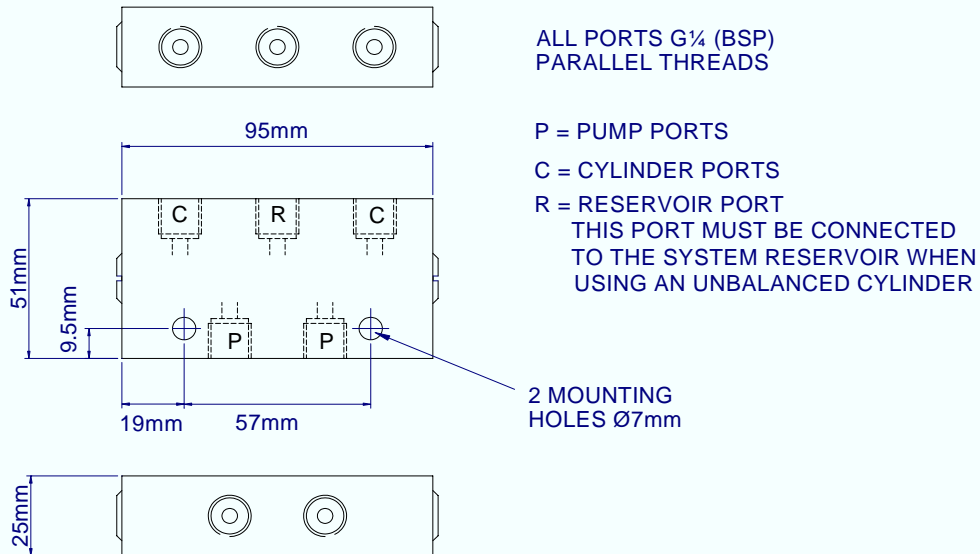
Materials

Manifold – aluminium	BS1490
Aluminium protection – anodizing	BS1615
External steel – zinc chromate	BS1706Zn3

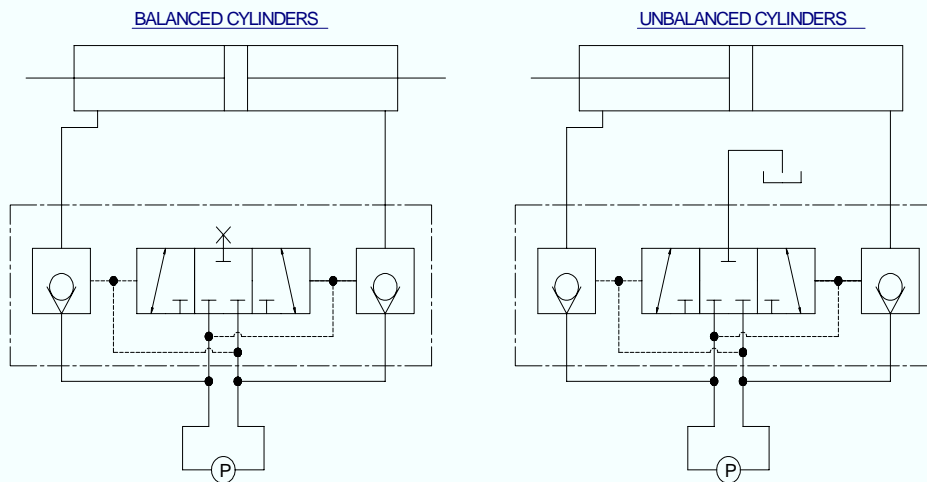
Weight

0.31 Kgs

INSTALLATION DETAILS



CIRCUIT DIAGRAMS



ORDER CODE

R2254

Hydraulic Projects Ltd
Exeter Road
DAWLISH
Devon
EX7 0NH
U.K.

Telephone: +44 (0)1626 863634
Fax: +44 (0)1626 866283
E-mail: sales@hypro.co.uk
Website: www.hypro.co.uk