

HYDRAULIC POWER UNIT DC CONSTANT RUNNING 4.5 LPM

Manufactured specifically for marine autopilot steering applications the versatile PC45 constant running power unit uses a heavy-duty 4 brush, fan cooled, 550 watt motor to deliver 4.5 lpm. Designed to be used for heavy duty applications on larger yachts or commercial craft these units come fitted with pressure compensated flow controls, relief valves and cylinder lock valves as standard.

Description

Once the hard-over time has been set via the speed control, the steering action is achieved by switching a damped heavy duty double acting solenoid valve. The motor and precision gear pump are protected by a pre-set relief valve, and check valves with toughened components positively lock the steering on course. A stainless steel clamp retains the stove enameled steel oil tank, and inside is a large capacity replaceable 15 micron return line filter to maintain system cleanliness. A heavy duty motor starting relay is also supplied, as are the rubber noise absorbing mounts.

Application

Designed and developed specifically for marine autopilot applications in the commercial and larger pleasure boat market the PC45 can be used with single or twin ram systems. The design of the unit also makes it compatible with unbalanced rams and pressurized reservoir type systems.

Features

- Heavy duty fan cooled motor
- 12v & 24v D.C. options.
- Low power consumption.
- 4.5 litre per minute variable flow
- Integral relief valve
- Quiet operation.
- Compact construction.
- Replaceable brushes.
- Service kits.
- Easy installation.
- Cylinder and hose kits supplied to suit.
- Adjustable pressure compensated flow control.



Technical Data

Performance

Maximum Pump output	4.5 l/min
Relief valve pressure setting	57 bar
Temperature rating	-20°C to +55°C
Maximum tank pressure	3.5 bar

Electrical

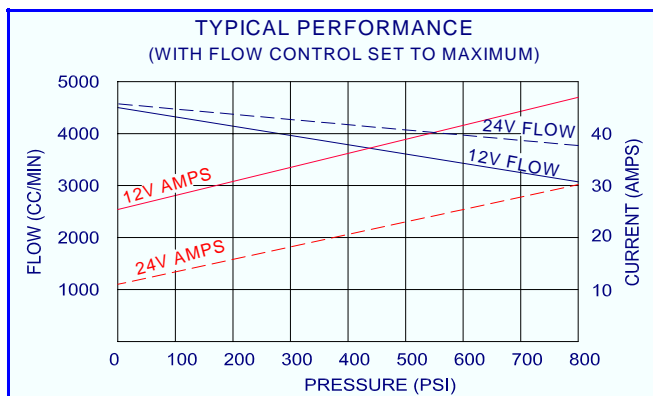
Motor voltage nominal	12Vdc or 24Vdc
Motor power 12V	405 watt
Motor power 24V	550 watt
Max continuous current 12V	34A
Max continuous current 24V	24A
Environmental protection	IP54
Motor connection	M6 studs
Motor relay	12V 12 watt 1.0A 24V 12 watt 0.5A
Solenoid coil connection	DIN 46350 plug
Solenoid coil power continuous	12V 31 watt 2.6A 24V 31 watt 1.3A

Recommended Oil

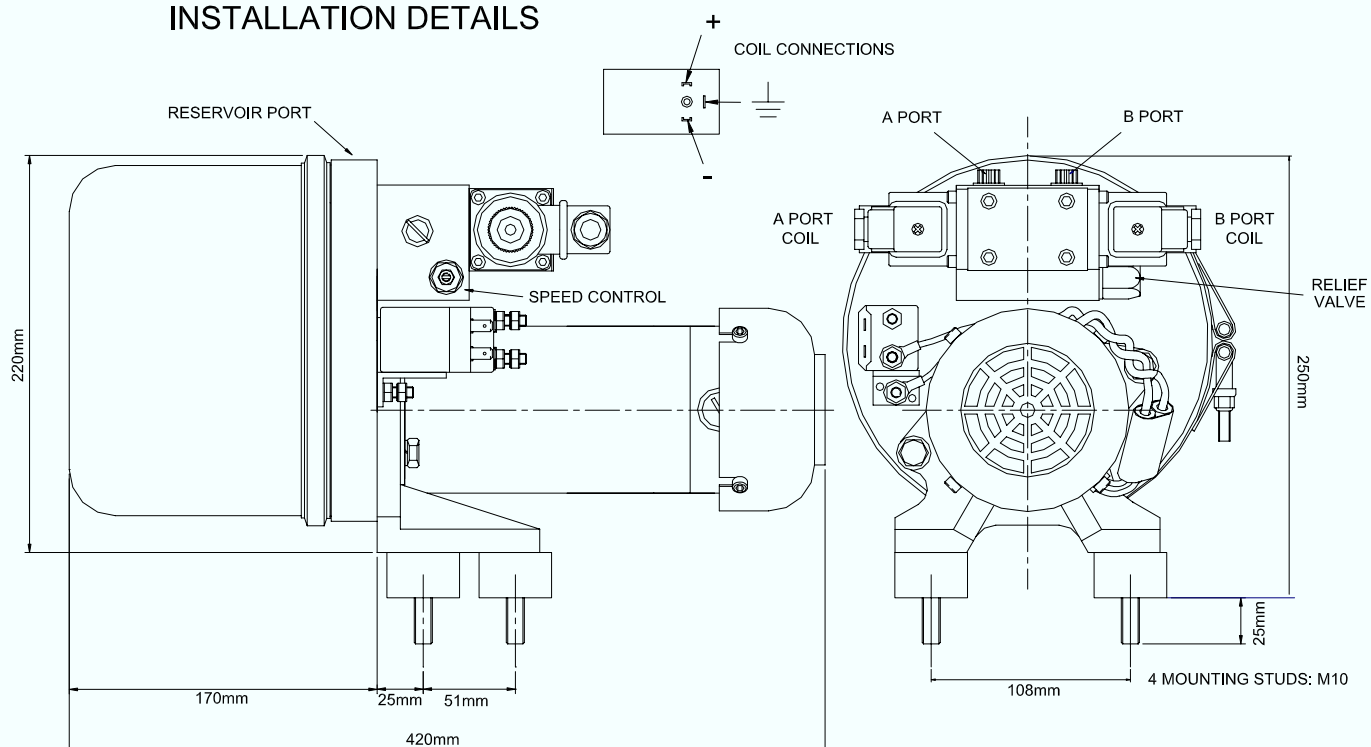
Tank capacity	4 litres
Mineral based hydraulic	ISO VG10 to ISO VG42
Ambient below 0 deg	ISO VG15
Ambient 0 to 35 deg	ISO VG22
Ambient above 35 deg	ISO VG32

Materials

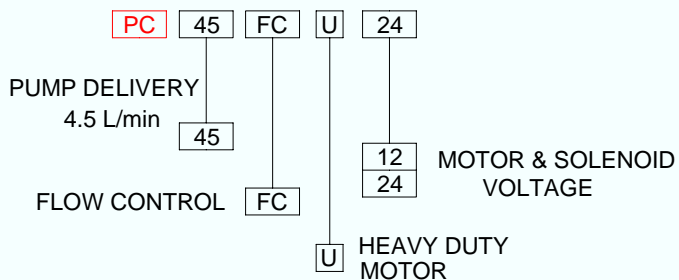
Body aluminium	BM25TF & BS1490
Tank	Stove enameled steel
Seals	Nitrile & PTFE
Weight	12 Kgs



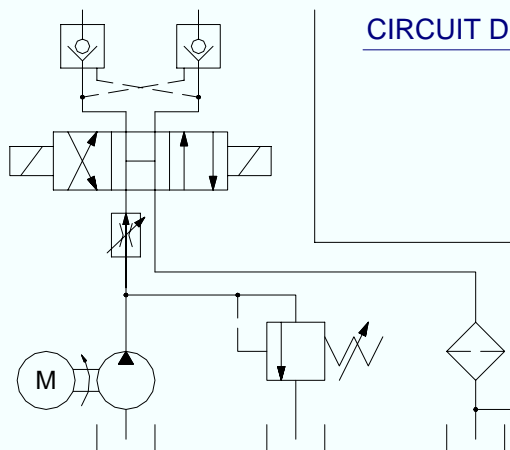
INSTALLATION DETAILS



ORDER CODE



CIRCUIT DIAGRAM



Hydraulic Projects Ltd
Exeter Road
DAWLISH
Devon EX7 0NH
U.K.

Telephone: +44 (0) 1626 863634
Fax: +44 (0) 1626 866283
E-mail: sales@hypro.co.uk
Web site: www.hypro.co.uk