

HS Hydraulic Steering Systems

The HS hydraulic steering systems are designed specifically for marine secondary steering applications. They come fitted with a range of three sizes of reversing pump and two sizes of constant running pumps. The systems are protected by integral relief valves. A solenoid clutch is also fitted so that manual mechanical steering can be used.

Description

The hydraulic steering systems comprise of a compact cylinder which includes the relief valves and solenoid clutch, a reversing or constant running pump, marine hoses, fittings and a reservoir. The system comes filled ready for installation. The size of cylinder can be selected with the pump type to give thrusts up to 840 kgs.

Application

Designed specifically for the marine autopilot market where they can be used on sailboats and powercraft with displacement and fast planing hulls. The pumps and cylinders can be matched to give the hardover times and thrusts to suit the application.

Features

- Shorter than conventional cylinders.
- Solenoid bypass valve.
- Integral relief valves.
- 12 or 24V options.
- Installation kits available.
- Fully serviceable.
- Quiet operation.
- Three reversing pump options.
- Two constant running pump options.
- Marinized hoses and fittings.
- Low maintenance.
- Replaceable brushes.
- Zero back drive.
- Low power consumption.



Technical Data

Performance	HS 32	HS 40	HS 50
Thrust at 62 bar	450 kgs	675 kgs	1080 kgs
Stroke of cylinder	203 mm	254 mm	305 mm
Volume of cylinder	149 cc	285 cc	553 cc
Relief valve setting	62 bar	62 bar	62 bar
Reversing pumps	1. l/min	2. l/min	2.5 l/min
Constant running pumps	0.5-2	.5 l/min	0.5-4.5 l/min
Temperature rating minimum	-20°C	-20°C	-20°C
Temperature rating maximum	+65°C	+65°C	+65°C
Hard over time typical	See graph		
Protection	IP44		

Electrical

Solenoid coil power continuous	15 watt @ 12V Dc
Reversing pump power	100 watt and 180 watt
Constant running pump power	325 watt

Recommended Oil

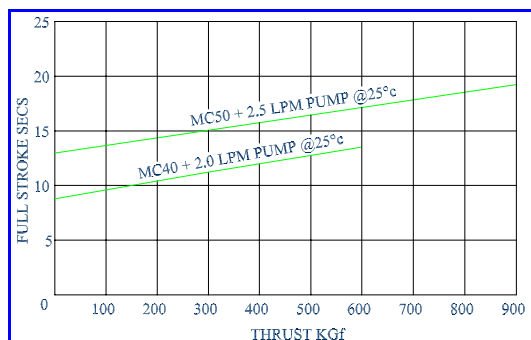
Mineral based hydraulic	ATF (40 CST @40°C)
-------------------------	--------------------

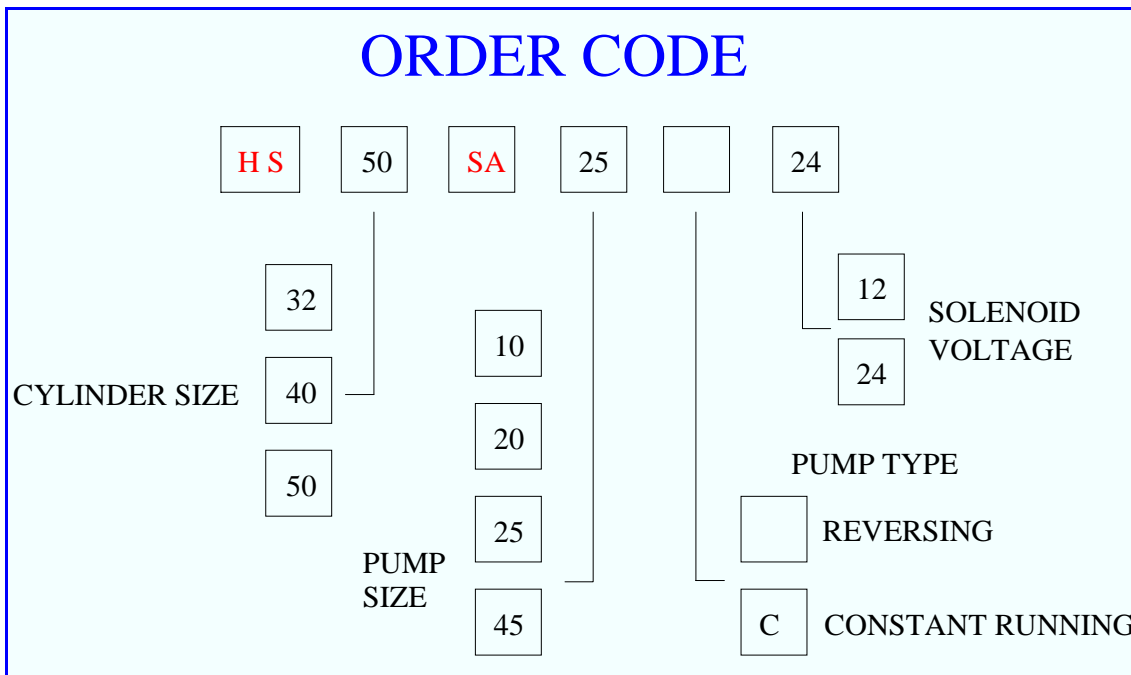
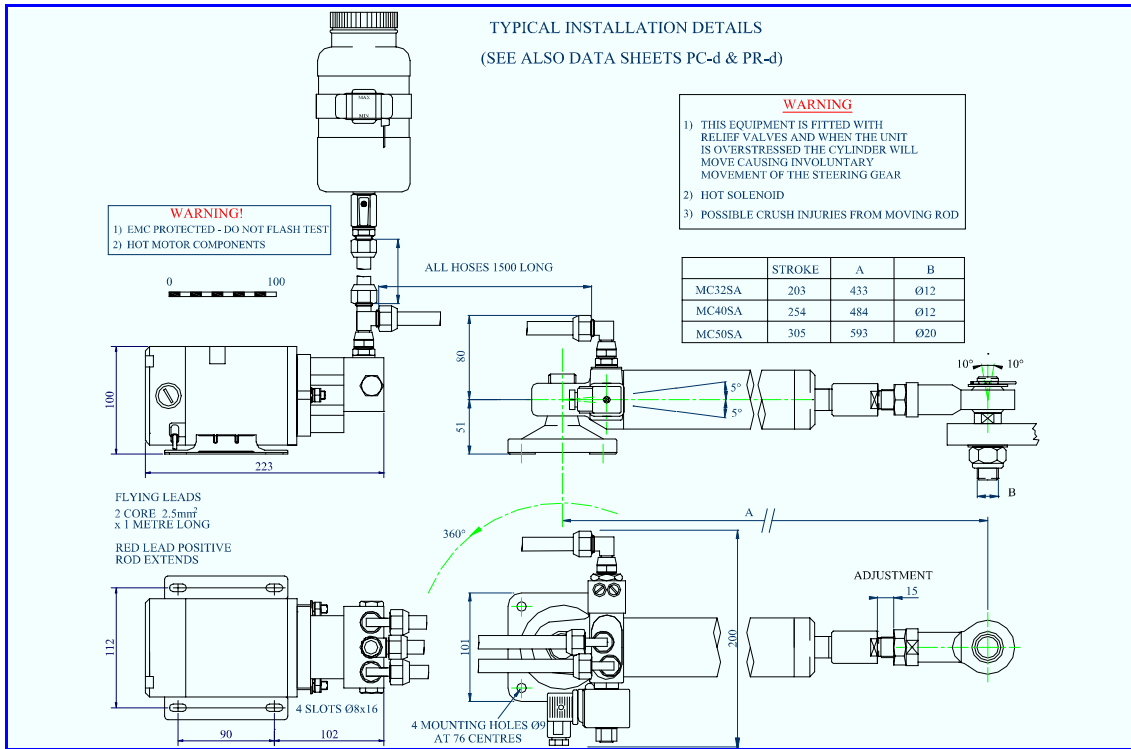
Materials

Body aluminium	BS1490
Piston rod	Stainless chrome plated
Seals	Nitrile & PTFE
Aluminium cavity	SP230

Weights Typical

MC40 & PR20	7.6 Kgs
MC50 & PC45	14.5 Kgs





Hydraulic Projects Ltd
Exeter Road
DAWLISH
Devon EX7 0NH
U.K.

Telephone: (00 44) 01626 863634
Fax: (00 44) 01626 866283
E-mail: sales@hypro.co.uk
Web site: www.hypro.co.uk