



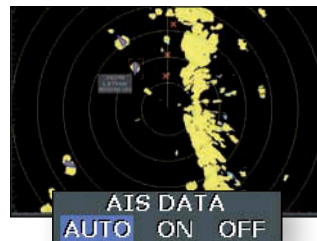
## AIS250 RECEIVER AND AIS500 TRANSCEIVER

### AUTOMATIC IDENTIFICATION SYSTEM (AIS)

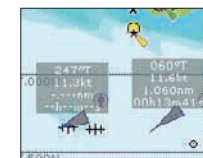
Operating in the VHF maritime band, the AIS system enables the wireless exchange of navigation status between vessels and shore-side traffic monitoring centres. Commercial ships, ocean-going vessels and recreational boats equipped with AIS transmitters broadcast AIS messages that include the vessel's name, course, speed and current navigation status.

### AIS250 RECEIVER MODULE

The Raymarine AIS250 Receiver module is a 'listen only' dual-channel AIS receiver that easily integrates with Raymarine multifunction systems, allowing AIS targets to be overlaid graphically in both the chartplotter and radar modes.



**Radar Overlay**  
Overlay AIS targets radar contacts on Raymarine multifunction navigation displays.



AIS Target Info: THE DIEGO			
Position	26°07' 6.09S	000°	000FT
Heading	080°07' 097W	306	0.0kt
Height	101'FT	CRG	0.401nm
MMSI	+00017885	TIDR	00:23:26S
IMO No.	222990055	Last seen	10/20/2006
Call sign	5YCB	Dist	10:52:53AM
IMO No.	5204484	Port	PORT EVERGLDES
Length	608FT	ETA	10:50
Beam	102FT	Moored	03:30:00AM
Draught	38.1FT	Status	Moved
		Target	Target

### Features

- Switched dual channel, multiplexed system – a single receiver uses sophisticated software to monitor AIS Class A and B transmissions over standard VHF frequencies.
- Overlay AIS targets on Raymarine multifunction displays in both chartplotter and radar modes.
- AIS target tracking enhances your situational awareness by monitoring a target's name, course, speed and navigation status.
- Reconcile AIS targets with radar targets for added safety.
- Built-in VHF/FM antenna splitter. No additional antenna required.
- Two NMEA 0183 input and two NMEA 0183 output ports with a built-in multiplexer for easy installation.

### System Requirements

- VHF Antenna.
- Chartplotter, multifunction display or PC application with NMEA 0183 input and AIS compatibility.
- Raymarine multifunction display requirements: C Series software version 4.29. E Series software version 4.29 or higher.

### AIS500 TRANSCEIVER

The AIS500 is a class B AIS transceiver allowing you to receive and transmit AIS navigation status information between vessels and shore-based traffic centres. The AIS500 networks with Raymarine multifunction systems using SeaTalk<sup>ng</sup> technology. An on board VHF splitter simplifies installation and dedicated GPS sensor ensures accurate position data when broadcasting your vessels' position.

### Features

- Class B AIS receive and transmit.
- Dual channel (multiplexed) AIS monitoring ability – vessel monitoring of class A and B transmissions.
- Built-in NMEA multiplexer enables multiple NMEA 0183 connections to the single NMEA input and output ports on Raymarine displays.
- VHF splitter permits sharing of a single antenna with radio and AIS.
- Includes external GPS antenna.
- SeaTalk<sup>ng</sup> networking – compatible with Raymarine E and G Series displays.
- NMEA 0183 compatibility with Raymarine A, C, E and G Series and other manufacturers capable of displaying AIS targets.
- Buddy tracking – distinguish favourite targets (MMSIs) from others by adding to favourites list.
- Silent mode allows you to turn off the transmit function if you do not wish to be seen during races or at your favourite fishing spot.
- Easy Installation and configuration.



AIS250



AIS500